

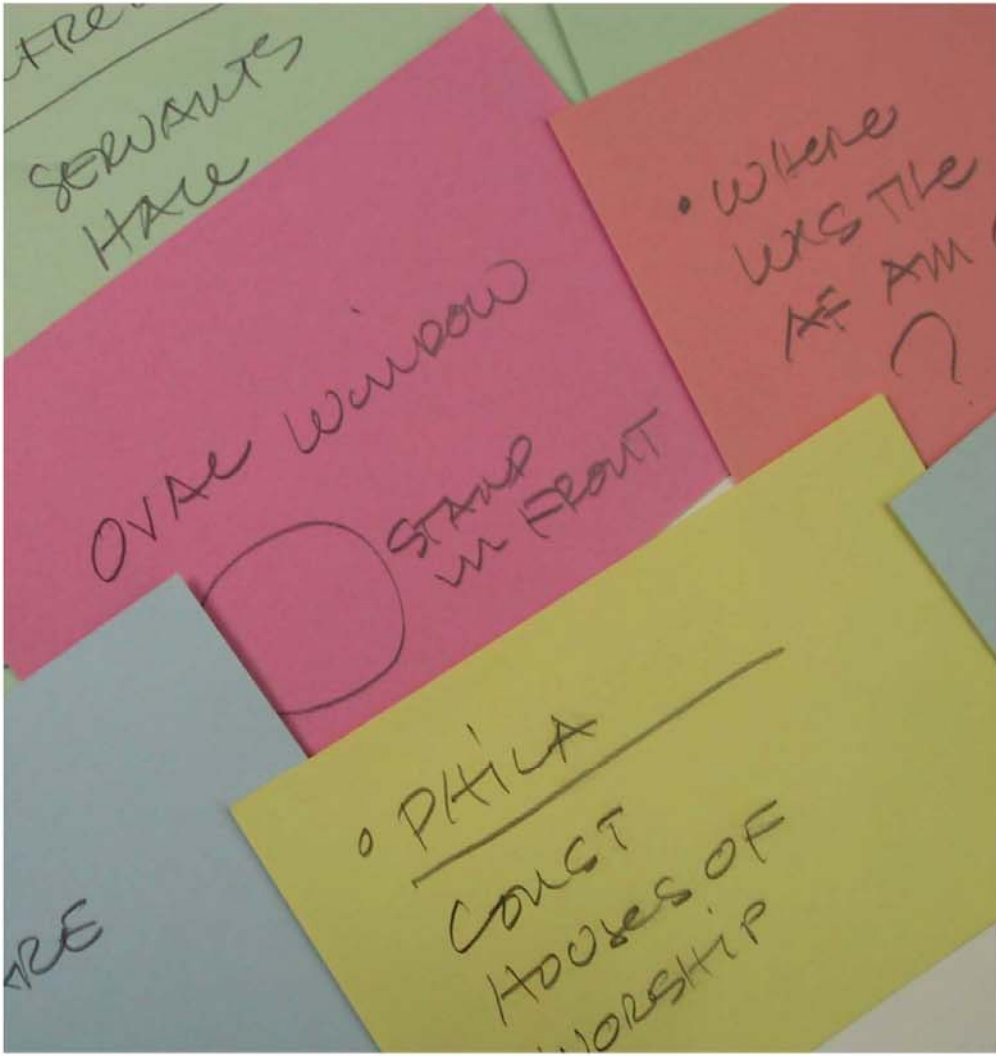


EXECUTIVE
MANSION

INHP EXECUTIVE MANSION

OlinPartnership

Vincent Ciulla Design



INHP EXECUTIVE MANSION

CARD SORT

After the planning team collected the stories during the first day of the workshop, the index cards were organized into major themes by the National Park Service team.

National Park Service team

- Joseph Becton, INDE
- Doris Fanelli, INDE
- David Hollenberg, NPS
- Dwight Pitcaithley, NPS
- Dennis Reidenbach, INDE
- Mary Reinhart, INDE
- Chris Schillizzi, INDE
- Russ Smith, NERO-NPS
- Coxey Toogood, INDE

Olin Partnership team

- Laurie Olin, Principal
- Elaine Rosenberg, Associate
- Jean Weston, Landscape Architect
- Bryan Hanes, Senior Landscape Architect

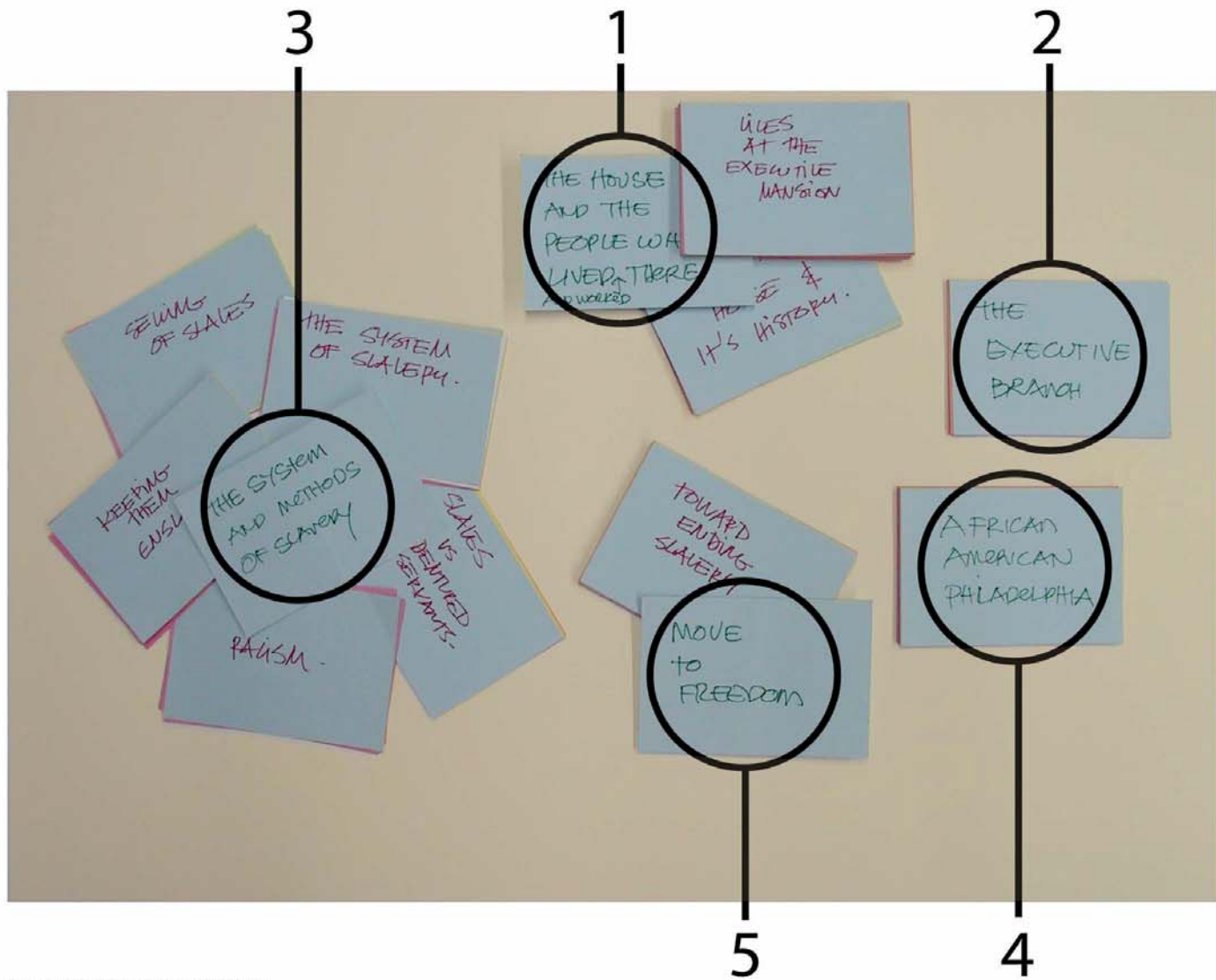
Vincent Ciulla Design team

- Vincent Ciulla, President
- Clement Price, Historian
- Jennifer Morgan, Project Manager
- Nicolas Guillin, Senior Designer

Community Participants

- Joel Avery, Multicultural Affairs Council, PCVB
- Tanya Hall, Multicultural Affairs Council, PCVB
- Karen Warrington, Director of Communication for Congressman Robert A. Brady
- Stevie Wolf, Historian
- Michael Cord, Avenging the Ancestors Coalition
- Ed Lawler, Independence Hall Association
- Harry Harrison, President of The African American Museum in Philadelphia





THEMES

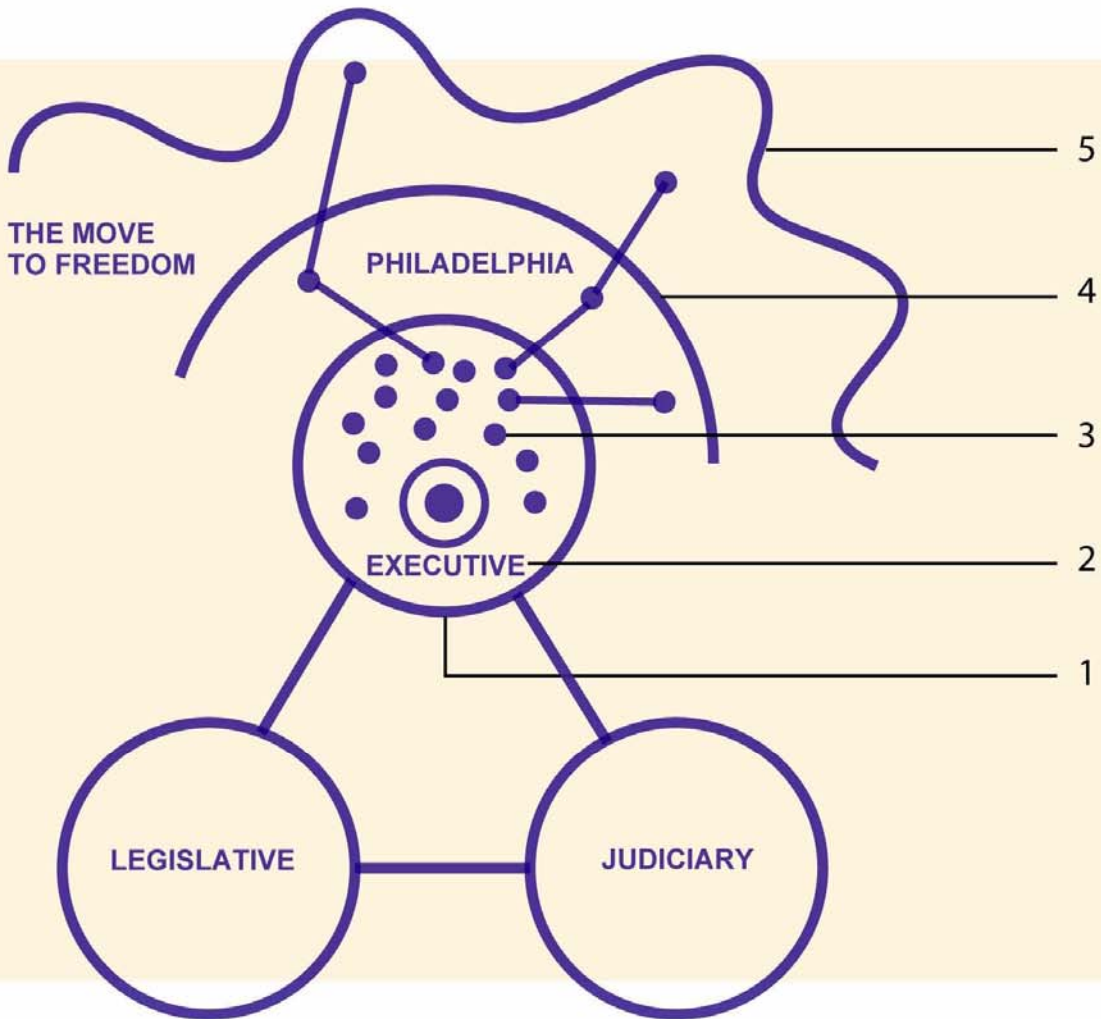
- 1 The house and the people who lived and worked there**
 - The physical house
 - Lives at the Executive Mansion with the Washington family
 - Lives at the Executive Mansion with the Adams family

- 2 The Executive Branch of the U.S. Government**
 - Relocation from New York
 - 1793 Fugitive Slave Act
 - Undeclared war with France
 - Alien and Sedition Act

- 3 The system and methods of slavery**
 - Racism
 - Slaves vs. indentured Servants
 - Economic, social and political system
 - Selling of slaves
 - Preventing slaves from escaping
 - How slaves survived

- 4 African-American Philadelphia**
 - The community of free African-Americans
 - Interaction between free and enslaved African-Americans
 - Links to other resources

- 5 The move to freedom**
 - Escape
 - Abolitionist movement



THEMES DIAGRAM

- 1 The house and the people who lived and worked there
- 2 The Executive Branch of the U.S. Government
- 3 The system and methods of slavery
- 4 African-American Philadelphia
- 5 The move to freedom



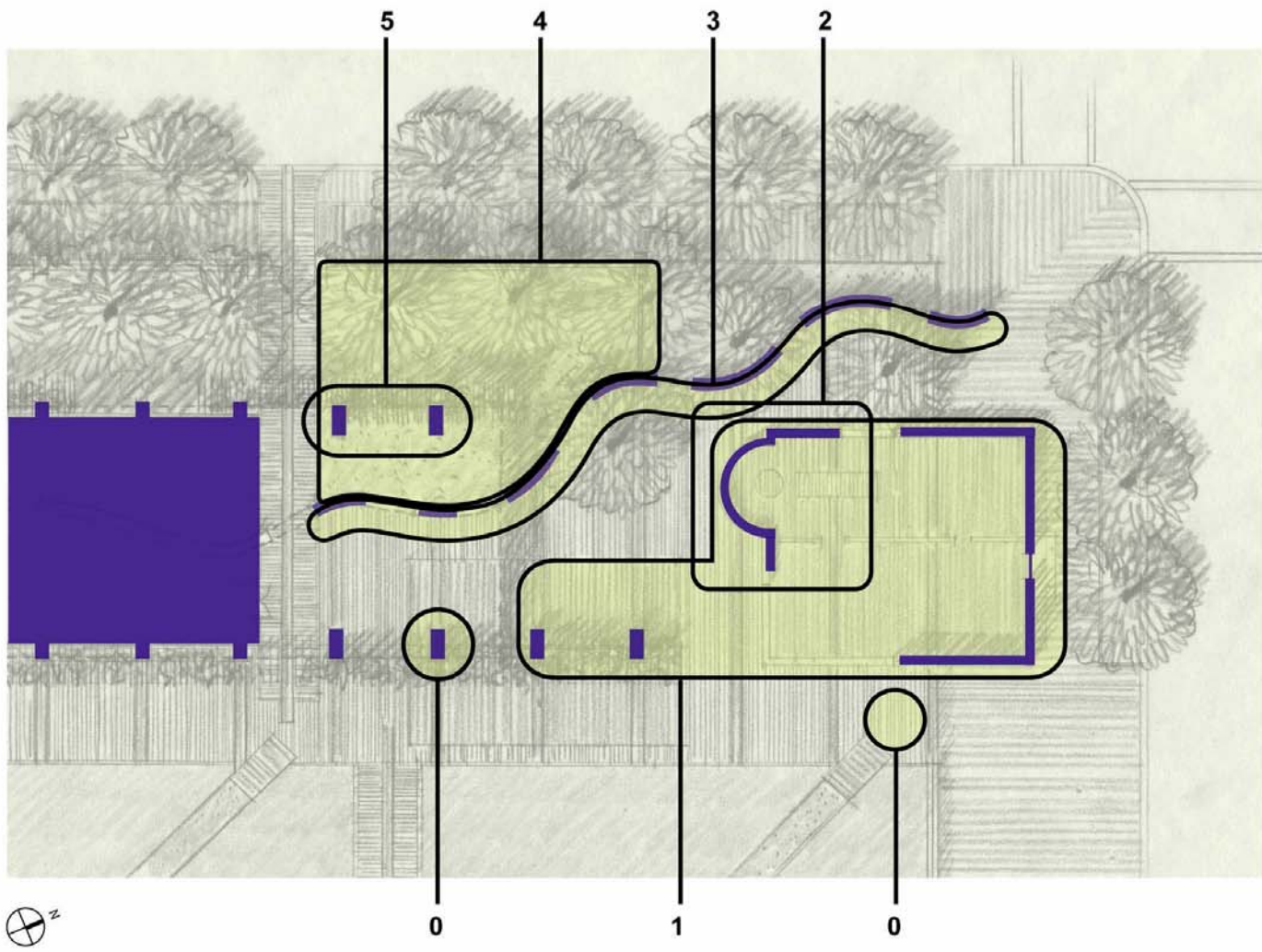
OVERALL SITE PLAN

- A Independence Hall
- B Liberty Bell Center
(12,000 square feet)
- C Executive Mansion Site
(12,000 square feet)
- D Directional signage to the
Liberty Bell Center and
Executive Mansion Site

 Visitor Flow



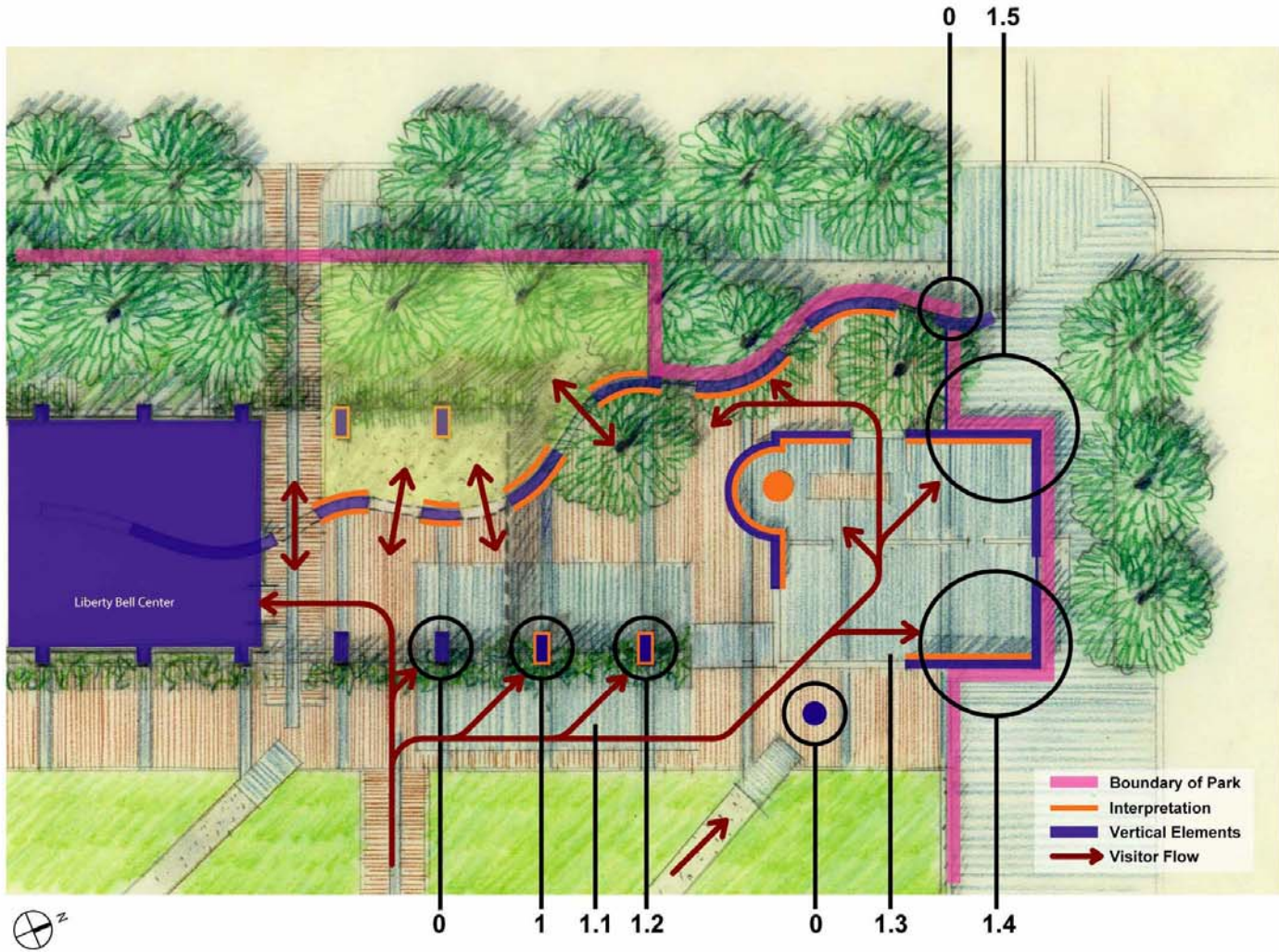
INHP EXECUTIVE MANSION



THEMES

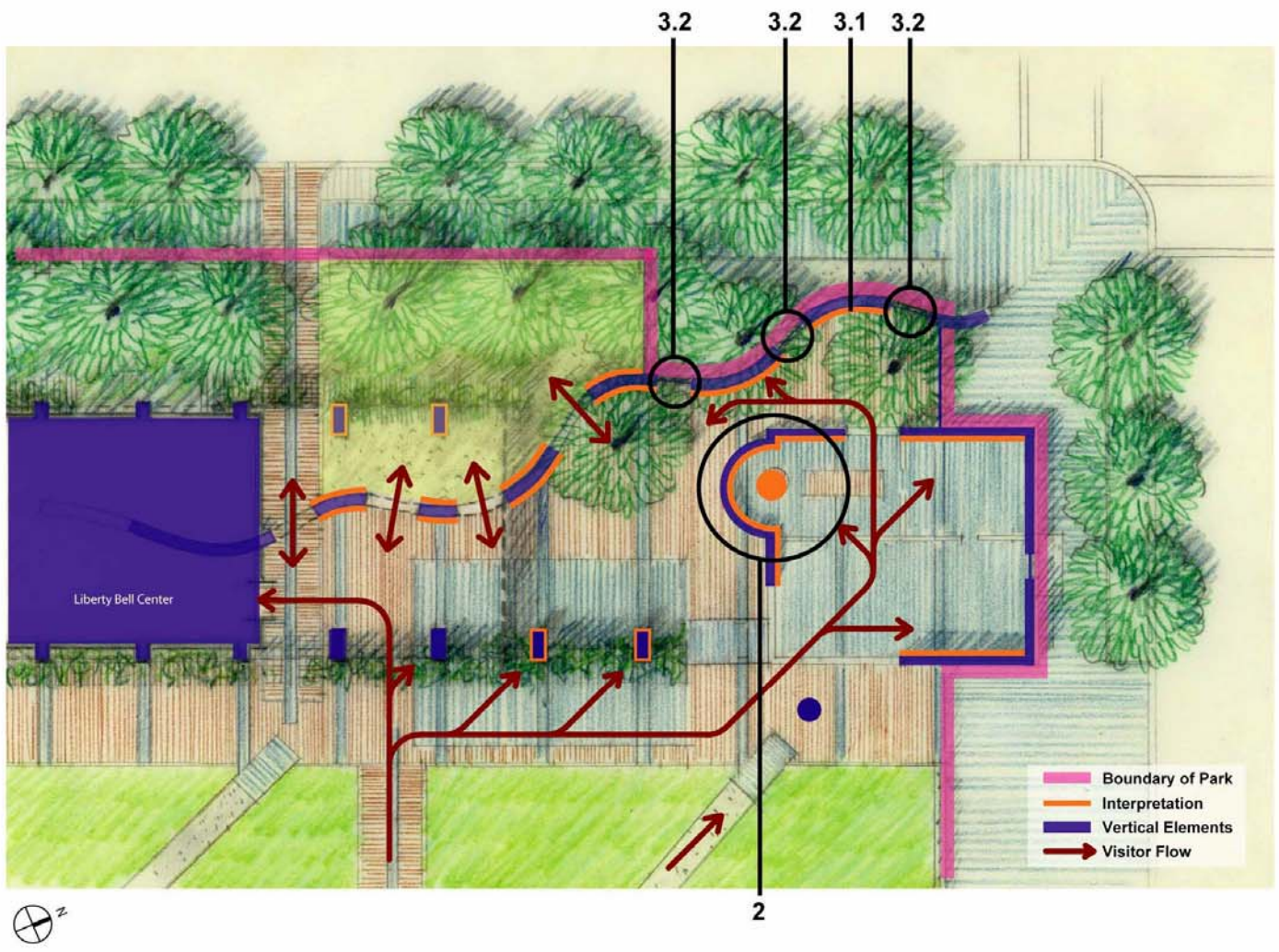
- 0 Introduction to Site
- 1 The house and the people who lived and worked there
- 2 The Executive Branch of the U.S. Government
- 3 The system and methods of slavery
- 4 African-American Philadelphia
- 5 The move to freedom

INHP EXECUTIVE MANSION



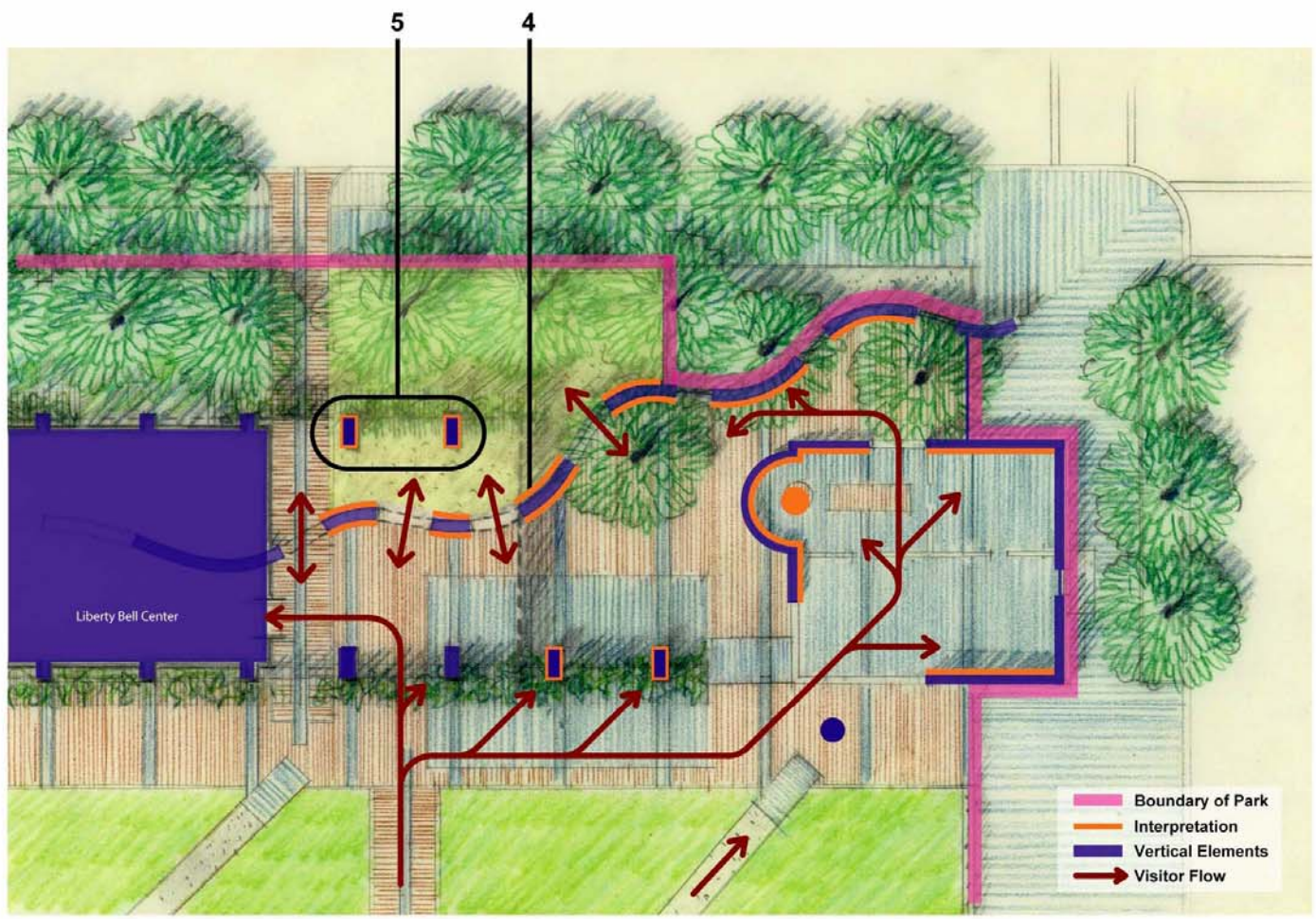
DETAIL SITE PLAN 1

- 0 Introduction to site**
- 1 The house and the people who lived and worked there**
Interpretive panel with floor plans will depict the house as it is thought to have existed in the 1790s.
- 1.1** Footprint of servants' and slaves' dining hall and kitchen. Area will be delineated by stone paving.
- 1.2** Artwork will commemorate the lives of the eight slaves who lived in the Executive Mansion during the 1790s.
- 1.3** Executive Mansion will be defined by walls, seatwalls and paving elements. Main interior partitions visible on ground, defining the rooms in the Mansion.
- 1.4** The east wall tells stories of Adams' presidency and life at the Mansion.
- 1.5** The west wall tells stories of Washington's presidency and life at the Mansion.



DETAIL SITE PLAN 2

- 2 The Executive Branch of the U.S. Government.**
 Interpretation at the curved seatwall will identify the Mansion as the first site of the Executive Branch of the U.S. Government.
- 3 The system and methods of slavery.**
 - 3.1** East side of the curved wall will tell the stories of slavery and emancipation. Content will be organized in chronological order from north to south on wall. A concise version of these stories will be available on the west side of the wall for visitors outside the park.
 - 3.2** Openings within the curved wall will incorporate artwork depicting the condition and institution of slavery in Philadelphia.



DETAIL SITE PLAN 3

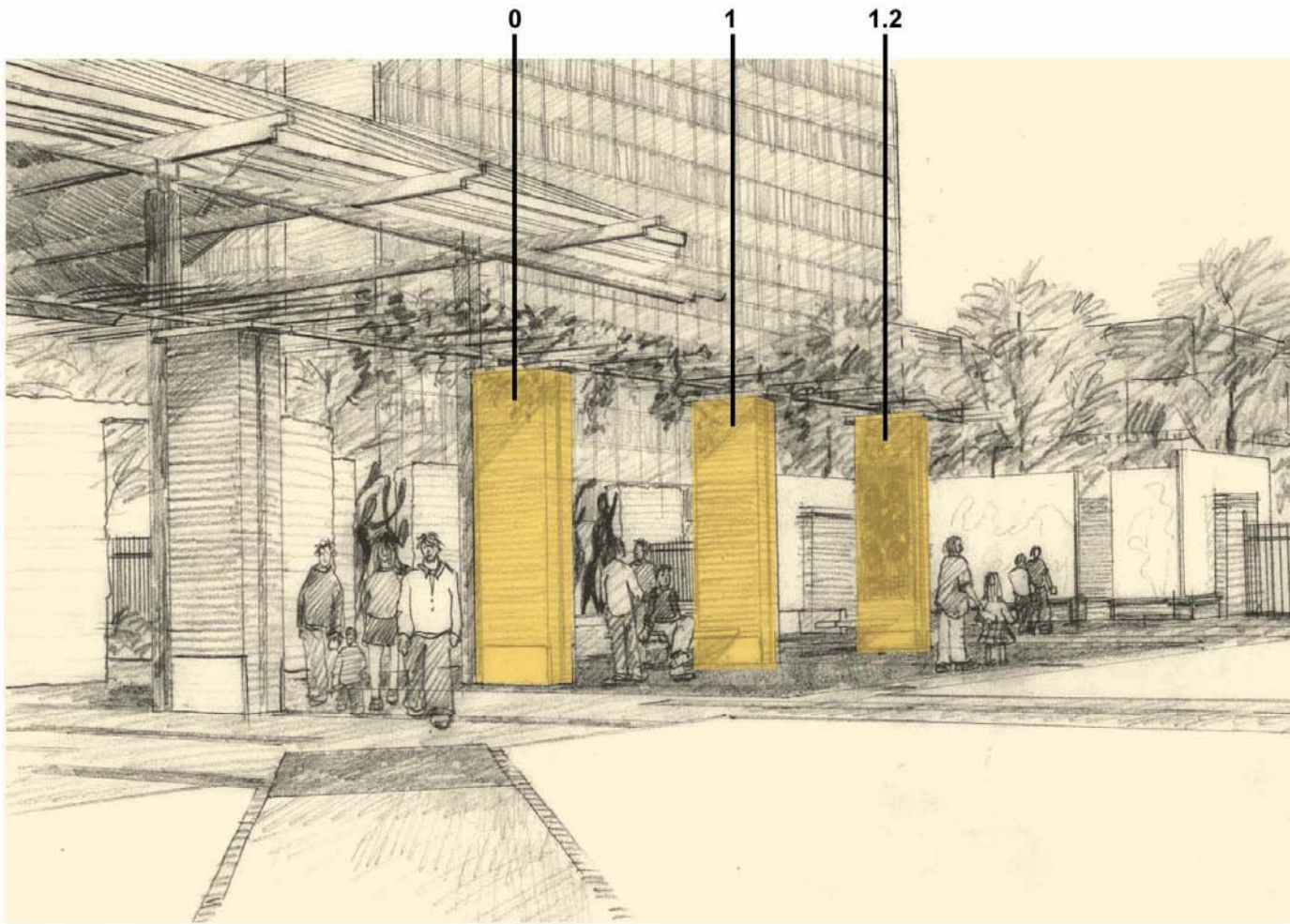
4 African-American Philadelphia

The area west of the curved wall will represent the free African community living in Philadelphia, a place where African slaves were exposed to other ways of life. Free and enslaved Africans were able to mingle at the market, in Washington Square and at Church. The curved wall will also tell the stories of prominent African-Americans living in Philadelphia in the 1790s.

5 The Move to Freedom

The two piers west of the curved wall will tell the escape stories of Oney Judge and Hercules, slaves of President Washington at the Mansion in the 1790s

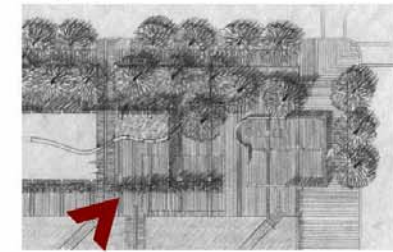


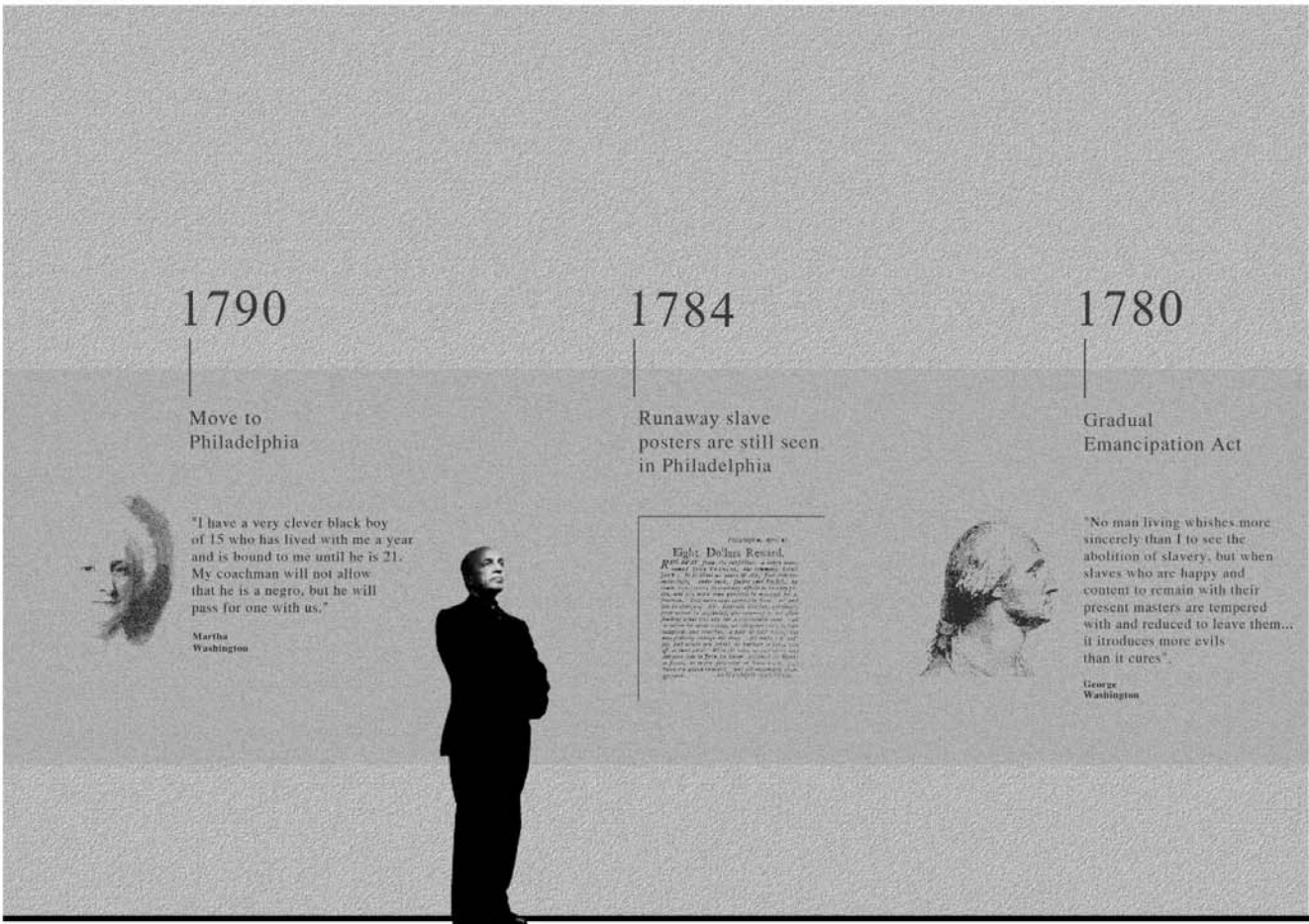


PERSPECTIVE FROM PEDESTRIAN PATH

- 0 Pier will be used as support for introductory interpretive material as well as wayfinding information.
- 1 Interpretive panel with floor plans will depict the house as it is thought to have existed in the 1790s.
- 1.2 Artwork incorporated into the pier will commemorate the lives of the eight slaves who lived here during the 1790s.

Key Plan





1790

Move to Philadelphia



"I have a very clever black boy of 15 who has lived with me a year and is bound to me until he is 21. My coachman will not allow that he is a negro, but he will pass for one with us."

Martha Washington

1784

Runaway slave posters are still seen in Philadelphia



1780

Gradual Emancipation Act

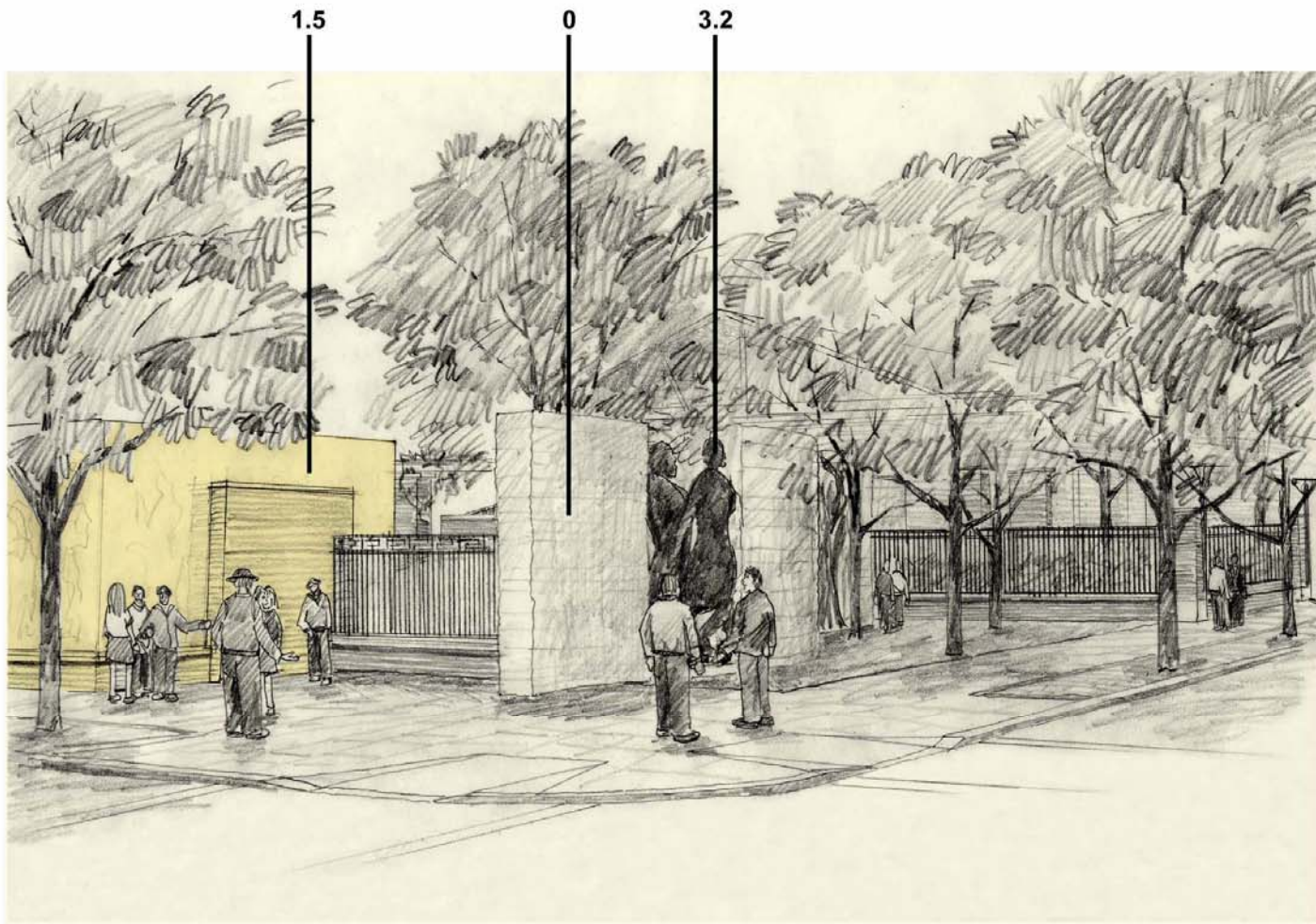


"No man living wishes more sincerely than I do to see the abolition of slavery, but when slaves who are happy and content to remain with their present masters are tempered with and reduced to leave them... it introduces more evils than it cures."

George Washington

EAST SIDE CURVED WALL GRAPHIC ELEVATION

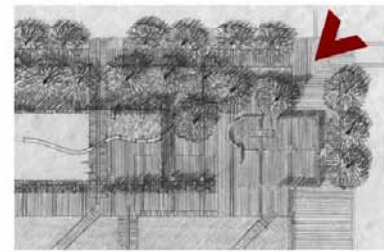
Interpretive graphics will be incorporated into the curved wall, proceeding chronologically from north to south. Content of interpretive text to be determined.

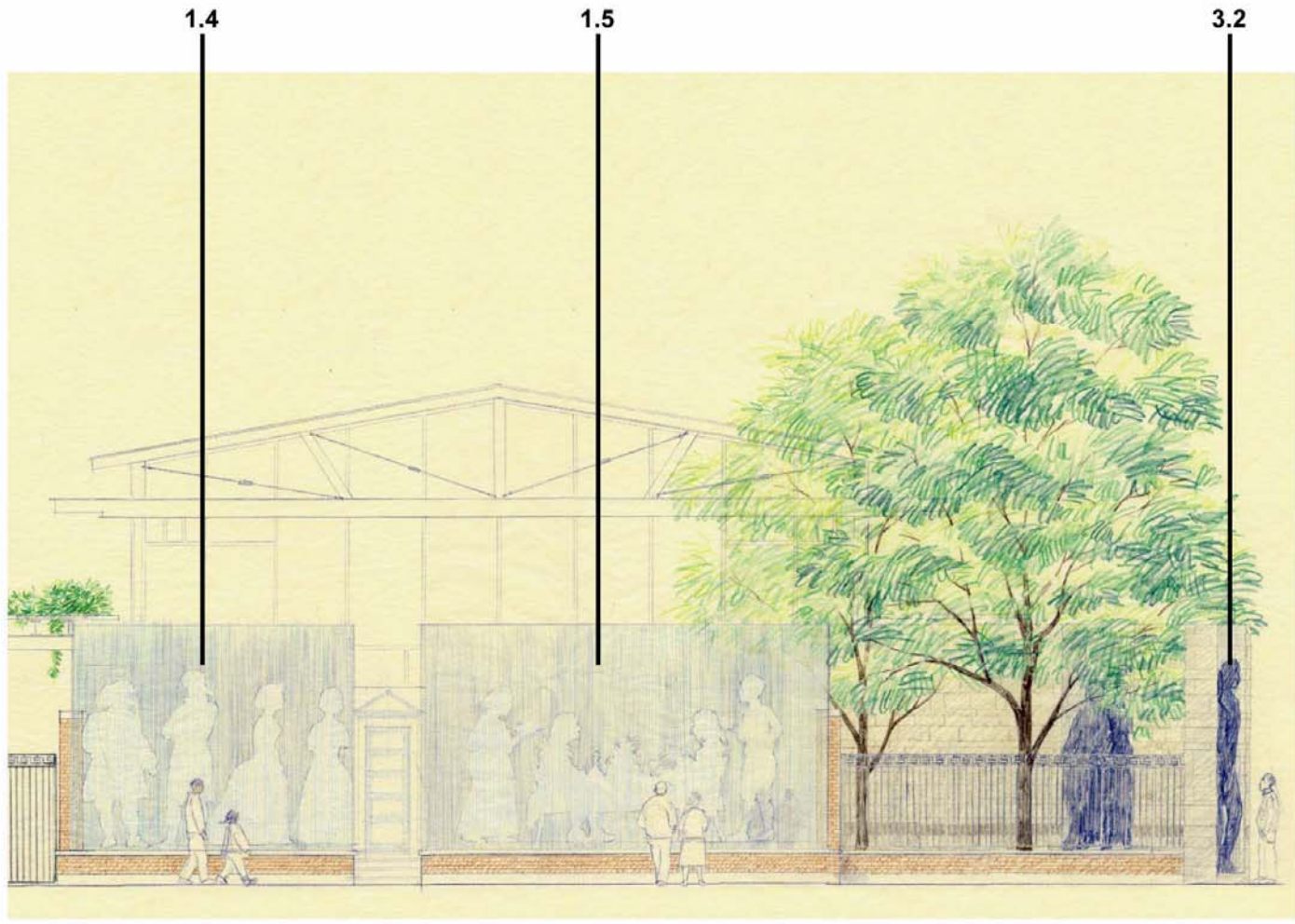


PERSPECTIVE FROM SIXTH AND MARKET STREETS

- 0 West side of the curved wall will include introductory interpretive material as well as wayfinding information.
- 1.5 Walls outlining the Executive Mansion.
- 3.2 Openings within the curved wall will incorporate artwork depicting the condition and institution of slavery in Philadelphia.

Key Plan





ELEVATION FROM MARKET STREET

- 1.4** The east wall will tell the stories of Adams' presidency and life at the Mansion.
- 1.5** The west wall will tell the stories of Washington's presidency and life at the Mansion.
- 3.2** Openings within the curved wall will incorporate artwork depicting the condition and institution of slavery in Philadelphia.

Key Plan

