

THE Correspondent

The Friends of Hope Lodge



553 South Bethlehem Pike

Fort Washington, PA 19034

215-646-1595

ushistory.org/hope

Colonial Dance Featuring “Newport Gardner” – Dance Master

On February 10, The Friends of Hope Lodge held a colonial dance at the EPI Center in Oreland, PA featuring the talents of dance master “Newport Gardner.”

Mr. Noah Lewis portrayed Mr. Newport Gardner (and portrays the persona of Ned Hector), whose African name was Occramar Marycoo.



Mr. Marycoo was born in Ghana in 1746 and sailed to the colonies in 1760 with the hopes of an education. He was sold into slavery and purchased by Caleb Gardner of Newport R.I., who renamed him Newport Gardner. His academic and musical talents flourished. Once freed, he taught music, was a gifted singer, and became the first African American to publish and sell his music in America. “Crooked Shanks” and an anthem entitled “Promise” are his most known works.

Mr. Marycoo founded the Free African Benevolent Society in Newport in 1780 and the Union Colored Congregational Church in 1782. He returned to Liberia at age 80 in 1826 and shortly succumbed to disease. He died soon thereafter. Mr. Marycoo’s home has been turned into a bed and breakfast in Newport, R.I. Visit the website: www.newportgardnerhouse.com for more information. Mr. Bill Keefer is the owner/operator and, when I spoke with him, was very excited about the dance featuring Newport Gardner. Mention Hope Lodge when you contact him!

Continued page 6

Colonial Revival Christmas at Hope Lodge



The second annual Colonial Revival Christmas was a great success! The house was filled with decorated rooms and trees on both the first and second floors. Several local groups participated including:

- Fort Washington Fire Company Ladies Auxiliary
- United Young Marines
- Friends of Fort Washington State Park
- Women’s National Farm and Garden Association
- Springfield/Enfield Campus-1st Graders
- The Ambler Symphony
- Girl Scouts of Freedom Valley

Continued page 4

From the President

As I reflect on my association with the Friends of Hope Lodge, I am grateful for the experience and friendships I have shared.

Taking over in mid-term for our dear friend Heinz Heinemann, I found some “big shoes” to fill. Heinz was, in my opinion, a great leader. While I had been on the Board (we only met, back then, every other month) my experience was mainly with the Encampment, as a re-enactor and then Board member working the event.

I continued serving as President for the next term and most recently for two more terms (2003-2007). There has been much to weather in administrative terms. Quite a bit of the time the site was without a permanent administrator. The Friends did an outstanding job with all things needed to keep the site on an even keel. The directives from Harrisburg seemed, at times, unending. And the changes, such as the recently executed Associates Agreement (July 1, 2007) at times seemed overwhelming. In the six and one-half years as President, the one constant has been the dedication of the Friends and Volunteers.

Therefore, I express my most sincere appreciation for the confidence, trust and cooperation the Friends have given me during my tenures as President and the support and understanding from my wife, Mary.

The Friends now have the good fortune of having a long-serving “Friend” in the person of Ron Denzel as the incoming President. The organization also has the cooperation of a fine professional staff whose constant attention to the site should result in a smooth and efficient operation of Hope Lodge on a daily basis.

I have been encouraged by the strides that we have made in some areas, particularly in reconnecting with our volunteers, addressing the concerns of the re-enactors and the expansion of programs.

Best wishes to you all, and may spirit and enthusiasm attend the future work of the Friends of Hope Lodge!

Thank you.

 Jack Washington



HOPE LODGE



Hope Lodge was built between 1743 and 1748 for Samuel Morris, a prosperous Quaker farmer, shipowner, miller, ironmaster, shopowner, and owner of Farnar's Mill. Hope Lodge is an excellent example of early Georgian architecture. During the American Revolution, the surrounding fields were used for the six-week Whitemarsh Encampment prior to the Valley Forge winter. The house was used by George Washington's surgeon general, John Cochran. Ownership of the house was transferred to the Commonwealth of Pennsylvania in 1957. *Open Fri.-Sat. 10am-5pm; Sun. noon-5pm (last tour 4pm, 3pm after daylight savings time ends). Closed Mon.-Thurs.(except by special request for larger groups or schools). Admission charged. Hours may be subject to change.*

STAFF LIST

Joan D. Hauger	Site Administrator, Hope Lodge
Edward Schorpp	Custodial Guide
Tom Bugno	Maintenance, Hope Lodge

PENNSYLVANIA HISTORICAL AND MUSEUM COMMISSION

Rhonda R. Cohen	Cheryl McClenney-Brooker
Rep. Lawrence Curry	Dr. Brian C. Mitchell
Sen. Jim Ferlo	Kathleen Pavelko
Laura S. Fisher	Rep. Scott Petri
Dr. Gordon A. Haaland	Sen. Joe Scarnati
Janet S. Klein	Dr. Gerald L. Zahorchak

Governor	Chairman	Executive Director
Edward G. Rendell	Wayne Spilove	Barbara Franco

THE CORRESPONDENT

Autumn 2007. *The Correspondent* is published three times a year by The Friends of Hope Lodge. For information about membership, please contact Hope Lodge, 553 South Bethlehem Pike, Fort Washington, PA 19034. 215-646-1595. Hope Lodge is owned and operated by the Pennsylvania Historical and Museum Commission. Individuals with disabilities who need special assistance or accommodation to participate in programs, events or a visit to the site should call 215-646-1595 in advance to discuss their needs. www.ushistory.org/hope

NEWSLETTER STAFF: Carolyn Denzel, George Gingrich (photographer), Jack Greenberg, Doug Heller, and Diane Horan.

SEND articles and events to be published in the next issue of *The Correspondent* to attn: Carolyn Denzel at Hope Lodge.

Donation of paper from our printer SIR SPEEDY, 725 Skipack Pike, Blue Bell, PA.

Friends Board

PRESIDENT ☞ Ron Denzel
VICE PRESIDENT ☞ Joe Ingersoll
SECRETARY ☞ Carolyn Denzel
TREASURER ☞ Debbie Hoffmann
PAST PRESIDENT ☞ Jack Washington
DIRECTORS ☞ Tracy Archibald, Sheya Astle,
Mary Greenberg, Nancy Gingrich, Jack
Gumbrecht, Bert Laudenslager
SITE ADMINISTRATOR ☞ Joan D. Hauger

Friends Committees

If you are interested in helping with any of the committees, please contact Hope Lodge for more information. Your help is always wanted. Do as much or as little as you are comfortable with.

FINANCE COMMITTEE

DEBBIE HOFFMANN

FOOD COMMITTEE

RON DENZEL, Phyllis DiVenti, Mary Greenberg

GARDEN COMMITTEE

NANCY GINGRICH, Jack Crompton, Betty Fields, Debbie Hoffmann, George Gingrich, Bea Kline

MEMBERSHIP COMMITTEE

JACK GUMBRECHT

MUSEUM SHOP

WANDA M. RAUCH

NEWSLETTER COMMITTEE

DOUG HELLER, Carolyn Denzel, George Gingrich, Jack Greenberg, Diane Horan

NOMINATING COMMITTEE

DEBBIE HOFFMANN, Bert Laudenslager, Clare Romig

PROGRAM COMMITTEE

BERT LAUDENSLAGER, Debbie Hoffmann, Jack Washington

PROPERTY COMMITTEE

JACK GREENBERG, Ron Denzel, Joe Ingersoll

PUBLICITY COORDINATOR

DEBBIE HOFFMANN

SCHOOL COMMITTEE

Lorraine Glausman, Carolyn Moyer, Gene Royall, Priscilla Royall, Jack Washington

SUMMER CAMP COMMITTEE

ELISE JACOBY, Amanda Croke, Rachel Croke, Madeline Romig, Sarah Romig, Claudine Waigenfeld, Jack Washington

VOLUNTEER COORDINATOR

SHEYA ASTLE

SPECIAL EVENTS

CONCERTS

NANCY GINGRICH

BRITISH CAR SHOW

RON DENZEL

ENCAMPMENT

JACK WASHINGTON, Gene Royall, Priscilla Royall

HOLIDAYS AT HOPE LODGE

DEBBIE HOFFMANN, Nancy Gingrich, Diane Horan, Doreen Jernigan

Volunteer Appreciation Event January 19, 2007

A huge Thank You went out to all the volunteers that attended the wine and cheese volunteer appreciation get together on January 19th in the colonial kitchen at Hope Lodge. The winter months do not offer many volunteer opportunities at Hope Lodge, and we had fun getting together with all of you who attended to enjoy appetizers and wine.

Please visit the website to find out the latest events dates and times. Thanks again for all you do!



Colonial Revival Christmas

Continued from page 1

- Boy Scout Troop 542/Cub Scout Pack 408
- William Penn Chapter N. S. Daughters of the American Revolution
- Kline, Woodward, & Friends
- Mike & Michelle Henry.

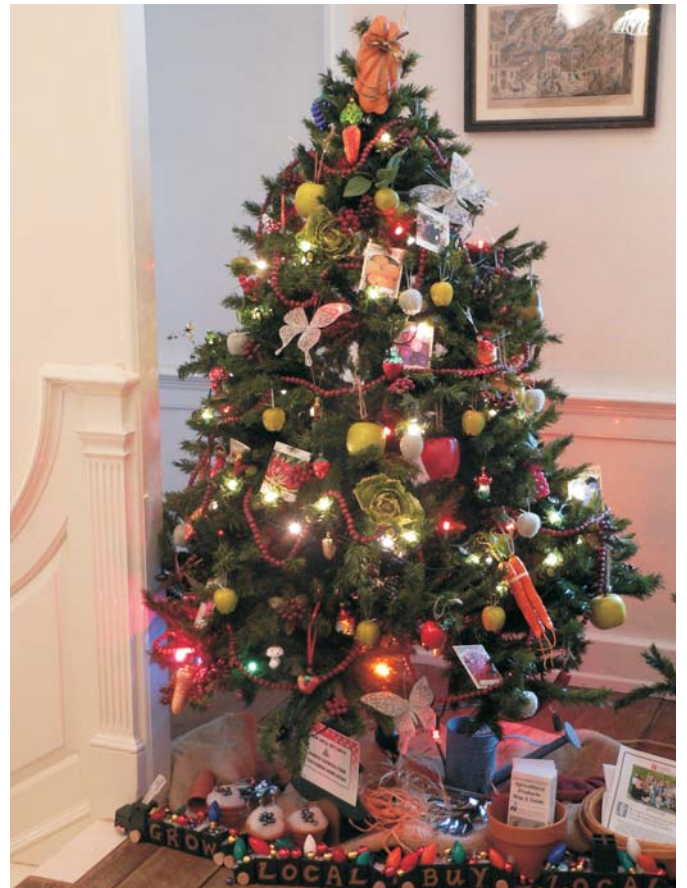
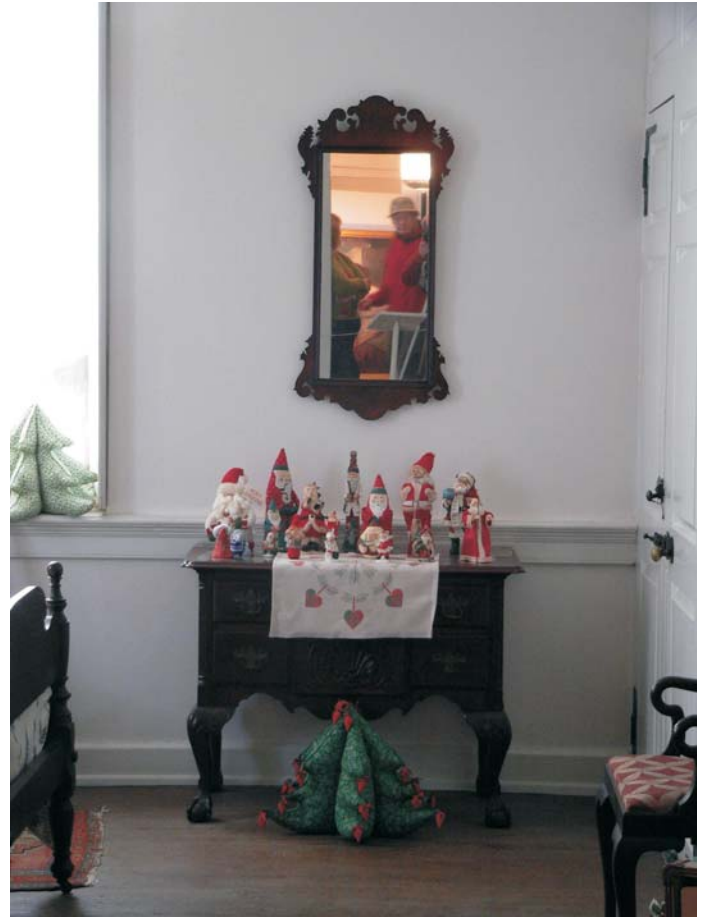
Our exhibit room was transformed into a giant dollhouse with the collections of Ilaina Reese's antique dolls and Robert Reese's antique bird ornaments. A working train provided by Bill Bustard encircled the tree filled with Nancy and George Gingrich's antique glass ornaments.

The Degn rooms were decorated as if to welcome their visitors during the holiday season. A vintage Santa Claus collection provided by Nancy and George Gingrich in the Degn bedroom and an exquisite hand-carved antique bird collection provided by Gene and Priscilla Royall in the Degn parlor transported visitors back to when the Degns occupied Hope Lodge. The Quaker rooms remained untouched in keeping with Quaker tradition.

Music filled the halls both Friday evening and Saturday. Kristina Denzel and Larry Toto greeted guests with lovely folk songs on Friday, while The Calise Trio played chamber music on Saturday.

Many thanks go out to all the volunteers and the key clubs of Wissahickon and Upper Dublin for all the hours spent getting Hope Lodge ready for this holiday event and staffing the event.

This year's event is scheduled for November 30 through December 2, so mark your calendar now!



Welcome New Board Members

The following new officers were elected to the Board of the Friends of Hope Lodge at the Annual Meeting on September 7, 2007: **Ron Denzel**, President; **Joe Ingersoll**, Vice President; **Debbie Hoffmann**, Treasurer. Elected as Directors are **Tracy Archibald**, **Sheya Astle**, both class of 2011, and **Bert Laudenslager**, class of 2009. Congratulations, and welcome to all.

British Car Show

Hope Lodge once again hosted the Delaware Valley Triumph Club's annual car show, The Brits Are Back, on Saturday, May 26, 2007. Thanks in part to the great weather, the event was a tremendous success, with over 150 cars on the field. In addition to the cars, entertainment was provided by the Bucks Caledonian Pipe Band, with several performances throughout the day. The British Special Air Service (S.A.S.) Group appeared in full reenacting uniform and displayed an array of World War II equipment.

Thanks to everyone who pitched in to help in admissions, the food tent, tours, gift shop, parking, set up and clean up. Without our dedicated corps of volunteers, it would be impossible to have these kinds of events.

Thanks also to the DVT volunteers who work so hard to put on this show. Planning this event starts in January, and many hours go into making this show the success that it has become year after year. DVT donates all proceeds of the car show to Hope Lodge, and this event has become one of our biggest fundraisers.

 Carolyn Denzel

Volunteer Profile: Sheya Astle



Sheya Astle can be found at most of the Hope Lodge events, volunteering in the mansion, cashiering in the food tent or gift shop, or just helping out with whatever needs to be done. In addition, Sheya is taking the historical interpreter training provided by Ed Schorpp, Hope Lodge's custodial guide, to lead tours of the mansion. Sheya's past two and a half years of volunteering will bring a personal perspective to her Hope Lodge tours.

Community service runs in Sheya's family. Both her mother and husband serve on local historical society boards. Originally from New Rochelle, New York (home of Thomas Paine), Sheya and her husband, Paul, currently reside in Lansdale. Their first experience with Hope Lodge occurred when Paul attended the Whitemarsh Encampment as a revolutionary war reenactor. Sheya herself is not a reenactor, but she has a keen interest in the day-to-day affairs of colonial life. Hope Lodge provides a living history lesson through the various events and programs.

When asked what she really enjoys about volunteering, Sheya responded, "The volunteers here are a great group of people. Everyone is so friendly and brings their own unique perspective to the site. Every time I'm here I learn something new from them."

We are very grateful for all Sheya contributes to the ongoing activities at Hope Lodge. As Sheya stated, "Volunteers are really the heart of any organization and any effort, no matter how small, is greatly appreciated. It's a great sense of satisfaction for only a few hours on the weekend." We could not have said it better!



The Ambler Flower Shop has kindly offered to donate a percentage of your purchase to Hope Lodge. Simply mention Hope Lodge (or if ordering online enter promotion code Hope) when ordering/making a purchase of your flowers. It's that easy! Please tell your friends, family, co-workers, etc. that they only need to mention Hope Lodge when ordering to help support this beautiful historic home.

“Newport Gardner”

Continued from page 1

A warm thank you goes out to Mr. Lewis for his expertise in teaching us Colonial English Country-dance steps. Instruction was given for the following dances: The First of April, Haste to the Wedding, Childgrove, Easter Thursday, and Well Hall. English Country Dance gained popularity in the 16th century during the reign of Elizabeth I. A combination of courtly dance and the vernacular English “country” folk dances delighted the monarchy and spread to other aristocratic and cultural venues. The dances gained acceptance throughout Europe and the Colonies, peaking by the late 18th century. English Country Dance faded as the waltz and polka were introduced in the early 19th century.

Participants enjoyed the instruction in colonial attire or comfort casual. Refreshments were served during intermission.

Hope Lodge will host the second annual colonial dance on May 3, 2008 on the front lawn of the mansion. Be sure to reserve the date on your calendars!

PS: No experience required

 **Debbie Hoffmann**



E-Mail Notification

Did you know that you can receive notifications of Friends of Hope Lodge events via email? For those who supply their email addresses, Friends of Hope Lodge and volunteers will receive email notifications of the events as a reminder to “save the date”. We hope you will also spread the word to your family and friends of the exciting events at Hope Lodge – all are welcome! If you haven’t already provided your email address and would like to get notifications, please send a message to hopedodge@comcast.net so that we may add you to our email notifications. We look forward to seeing you at our upcoming events!

 **Debbie Hoffmann**

Embroidery Exhibit

The Embroidery Guild of Philadelphia and the Friends of Hope Lodge are proud to present an extraordinary embroidery exhibit of over 60 pieces of work by the guild. Many of the pieces illustrate stitches used in the 18th Century, such as Jacobean woolwork (a variety of crewel), bargello (a repeating zigzag “flame” pattern), and samplers that were a means of recording stitches and patterns. As seen in the contemporary items in the display, the 18th century artisans used the stitches for decorating clothing, wall hangings, domestic furniture, boxes, bell pulls, and pillows. During the colonial period, most threads were wool or silk based. This exhibit displays many varieties of modern-day thread from cotton to metallic to ribbon, giving a fascinating dimension to the pieces. The exhibit runs from now until November 11th. This is one exhibit you don’t want to miss!

 Debbie Hoffmann



Genuardi's Cash-Back

Did you know you can have up to 3% of your Genuardi's purchases donated to Hope Lodge electronically through their E-Scrip program? Sign up by going to Genuardi's service desk or to www.escrip.com. By simply designating the Friends of Hope Lodge and Mather Mill, Group ID number 149538543, Hope Lodge will benefit each and every time you use your Genuardi's club card. It's easy, it's fast, and it's a benefit that keeps giving each time you shop at Genuardi's!

 Nancy Straub Gingrich

Garden Committee

A big “Thank You” to the Board of the Friends of Hope Lodge for making it possible for the Friends and your Garden Committee to hire a professional landscaper to weed, edge, and mulch the flower garden this summer. As you may know, our very small Garden Committee was unable to keep up with the weeding, feeding, spraying, mulching, and edging necessary to maintain an attractive public garden. Serious renovation has been needed for many years. Now that the truly back-breaking work has been done, the Garden Committee hopes to do more planting and to better maintain the herbaceous borders. We hope you have noticed what a great job was done. The Garden Committee also wishes to thank Bea Kline and her helpers for the attractive planting and excellent maintenance of the herb garden. It always elicits compliments from visitors.

Need a Gift?
**In a quandary? Need a gift
for that important birthday or
anniversary?**
Visit our Gift Shop!
**Or, how about a membership
to the
Friends of Hope Lodge? We
always need more members
and you'll be giving the gift
of new friendships!**
**Call Hope Lodge at
215-646-1595**

FRIENDS OF HOPE LODGE

553 SOUTH BETHLEHEM PIKE

FORT WASHINGTON, PA 19034

HOPE LODGE CALENDAR OF EVENTS

November 3&4

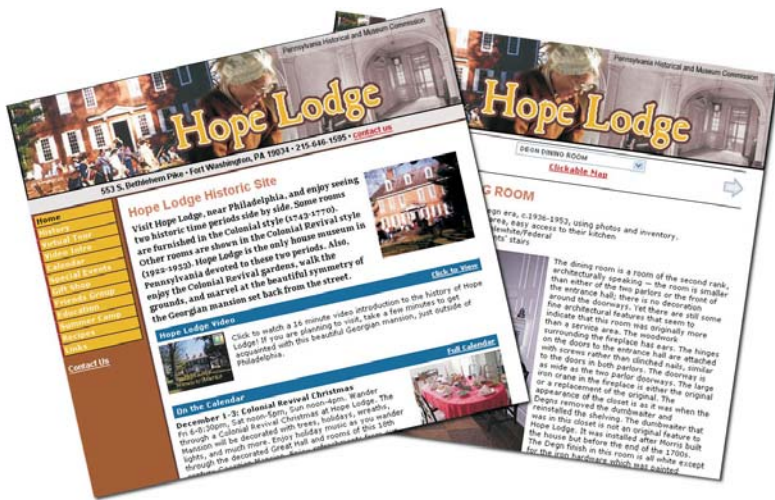
1777 Whitemarsh Encampment Experience a tribute to the original 1777 Whitemarsh Encampment and to American and British soldiers of the Revolutionary War! Reenactors, military skirmishes, tactical demonstrations and drills, a field hospital in our 18th century barn, dirt redoubts, colonial crafts, special tours, and much more. Admission charged.

Nov 30-Dec 2

Holidays at Hope Lodge Join us at Historic Hope Lodge for a dazzling and tasty introduction to the holiday season. Decorated trees and grounds welcome in the holiday season. Admission charged.

Visit Our Website

Surf on over to our website! This newsletter is archived there (if you accidentally misplace it), take a virtual tour, watch the video, see our full up-to-date calendar, and so much more. It's online at: www.ushistory.org/Hope.



Hope Lodge Museum Shop

HOPE LODGE  NOTE CARDS
(15 cards / envelopes)



\$ 4.95

*Friends of Hope Lodge and Mather Mill who present an active membership card will receive a **10% discount** on all purchases.